



CLUBHOUSE[®]

DECKING

When you install high-quality PVC decking, you need a smart fastening system to show off the finished surface. Clubhouse offers an easy-to-install complete hidden fastening solution that's engineered to work.



Clubhouse ConnectClip[™]

With the new ConnectClip system you get a fastener that goes down fast and leaves the deck surface unmarred.

- Ideal for main decking areas
- Two packaging options:
 - 50 square ft of individual hand driven screws
 - 300 square ft of collated pneumatic scrails, for use with TigerClaw gun



Cortex[™] Hidden Fasteners

Perfect for stairs, perimeter boards and hard to reach areas, Cortex plugs blend seamlessly.

- Made from Clubhouse stock for excellent color match
- All eight stylish Clubhouse decking colors available
- 100 lineal foot package

For more information, call 905-265-0022 or
email support at contactus@trunorthdeck.com.
www.clubhousedecking.com

Clubhouse ConnectClip™

INSTALLATION PROCEDURE

IMPORTANT:

Read all instructions carefully and completely to ensure proper installation.

WARNING:

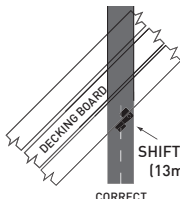
Parts have sharp points & edges. Use extreme caution when handling & installing. Wear safety glasses at all times.

Tools & Materials needed:

- Safety Glasses
- Power screw gun with ratcheting torque setting

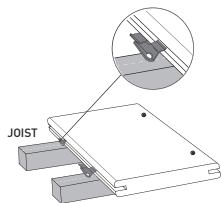
STEP 1: Installing the first board

Fasten one edge of the first board at each framing support using Cortex Fasteners for Clubhouse Decking or another brand of quality 2½" (63.5mm) deck screw. It is important that this board is straight and well secured. Allow minimum of ¼" (6.35mm) gap between house and first deck board.

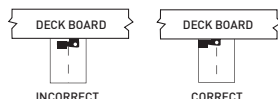


Follow fastener guidelines.

STEP 2: Position Fasteners



Fully insert Clubhouse Connect Clip fastener into grooved edge of deck board. Screw hole should line up with the center of the support joist.



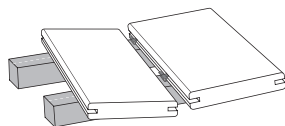
STEP 3: Install first fastener

While standing on deck board, install provided screw at 45° angle through fastener and into joist, while applying pressure on fastener. Install one fastener and screw at each support joist.



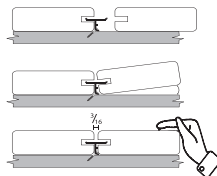
Make sure fastener body is vertical to deck board and the screw is holding fastener down tight to support joist. Adjust torque setting on screw gun to prevent spin out of the screw head.

STEP 4: Completing installation of boards



a. Place next deck board into position against fasteners. Slightly raise outer edge of board being installed and slide board onto fasteners until board contacts spacer tabs.

b. Check gap between boards for consistency. Apply force to ensure board is fully installed.



Repeat steps 2 thru 4 until deck is complete.

Cortex™ Hidden Fasteners

INSTALLATION PROCEDURE

Suggested drivers:

- Corded drill with ½" chuck
- Cordless drill with ½" chuck and 18V battery
- Impact driver

STEP 1:

Using the Clubhouse setting tool, drive the fastener to the preset level below the deck surface. It must be driven perpendicular to the deck, with two screws per joist.

STEP 2:

Place the plug into the cored hole and gently tap until it is flush with the deck surface.



Suggested fastening patterns:

- 2 fasteners, 12" or 16" on center for perimeter boards
- 2 fasteners at each stair stringer
- Minimum ¾" from edge of deck board

IMPORTANT INFORMATION

- The Clubhouse setting tool must be used to set the Cortex screw at the correct depth.
- The Clubhouse fastener must be driven perpendicular to the deck surface for proper fit and ideal finished look.
- The cored hole must be free of debris or moisture.
- Use a smooth hammer head to set the Clubhouse plug.
- Use of non-Clubhouse screw or Cortex plug will nullify the warranty of the fastener. (See FastenMaster warranty)

Use the Cortex Hidden Fastening System to hide deck screws on stairs, perimeter boards and more.

Coastal/Marine Applications

Fasteners supplied with Cortex plugs and 300 SqFt ConnectClip boxes are not approved for coastal/marine applications. ConnectClip 50 SqFt bags have stainless steel screws and clips in them and are coastal approved.