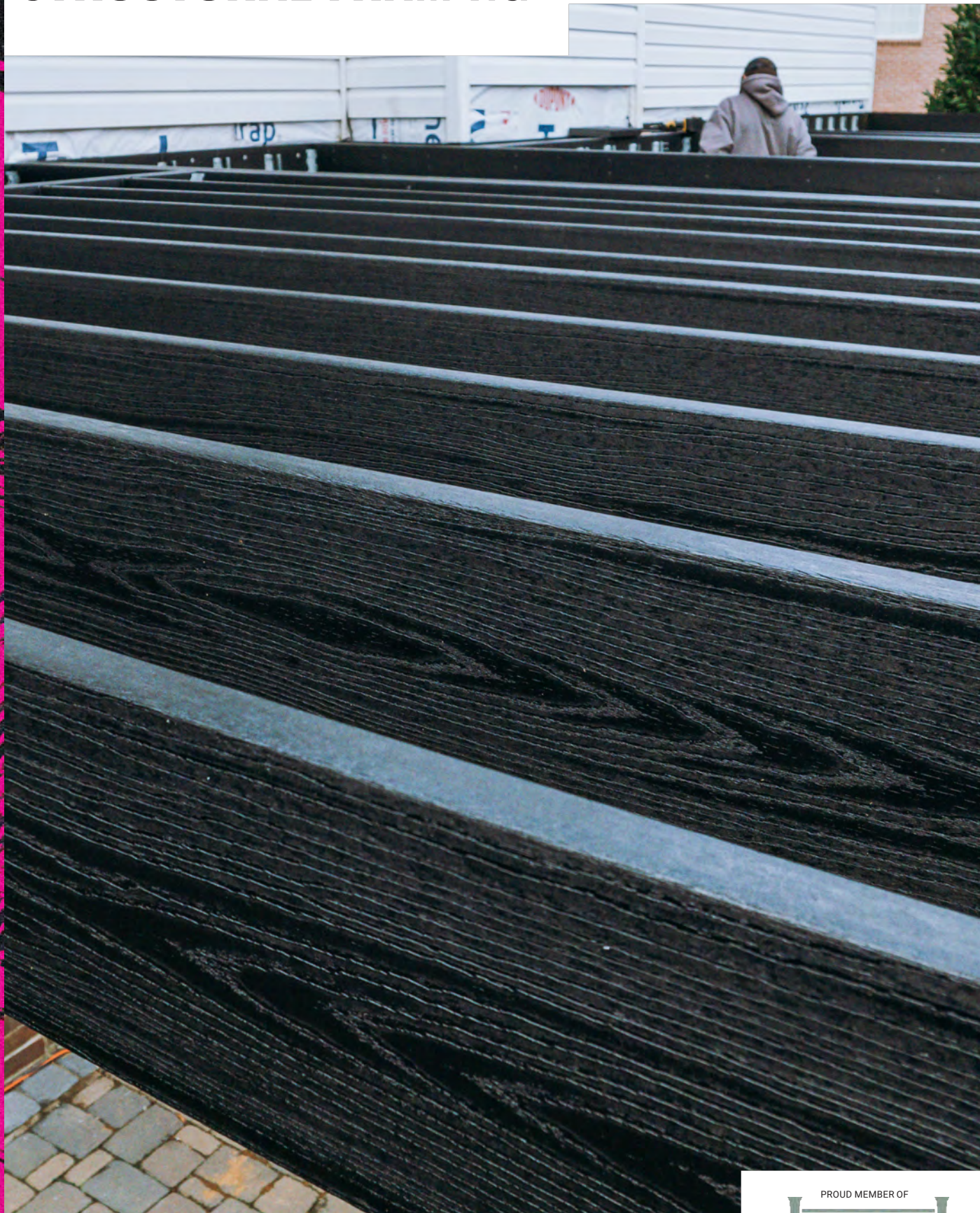


OWENS CORNING LUMBER

# STRUCTURAL FRAMING

ACCESS DIGITAL  
VERSION HERE





# OWENS CORNING LUMBER STRUCTURAL FRAMING

## ROTPROOF. RUSTPROOF. COMPLICATION-FREE.

Owens Corning Lumber Structural Framing is a rotproof, rustproof composite alternative to traditional wood and steel. Designed to install like the lumber you use every day.<sup>1</sup> Made to last.

- Wood-free composite lumber
- 5 profile sizes: 2" x 4", 2" x 6", 2" x 8", 2" x 10" and 2" x 12"
- Limited lifetime warranty — Residential
- 25-year limited warranty — Commercial

### DISCOVER THE GLAS-POWERED™ DIFFERENCE



Owens Corning Lumber is reinforced with Advantex® Fiberglass™, a proprietary corrosion-resistant technology that adds strength and durability properties from the inside out.

#### STRENGTH + DURABILITY



#### DESIGNED FOR DURABILITY

- Resists mold, mildew, and pests
- Allows for contact with water (salt and fresh) and ground

#### ROTPROOF. RUSTPROOF.



#### THERMAL-RESISTANT DESIGN

- Designed for low expansion and contraction
- Heat-reflective technology

#### THERMAL EXPANSION STABILITY



#### EASY TO INSTALL

- Cuts and installs just like wood
- Flat and uniform boards

#### COMPLICATION-FREE

<sup>1</sup>Owens Corning Lumber is specifically designed for deck and dock framing, and is not intended for use in other applications. Not for internal use.

ATTRIBUTES	OC™ LUMBER STRUCTURAL FRAMING	STEEL	TRADITIONAL WOOD
<b>GLAS-POWERED™</b>	<b>Advantex® Fiberglas™</b>	×	×
Rotproof	✓	✓	×
Rustproof	✓	×	✓
Allows for water (salt & fresh) contact	✓	×	×
Heat-reflective technology	✓	×	×

## STANDARD PROFILES



**2" x 4" (1.5" x 3.5")**  
Standard Lengths: 12', 16', 20'  
Woodgrain: Both Sides



**2" x 8" (1.5" x 7.5")**  
Standard Lengths: 12', 16', 20'  
Woodgrain: Both Sides



**2" x 6" (1.5" x 5.5")**  
Standard Lengths: 12', 16', 20'  
Woodgrain: Both Sides



**2" x 10" (1.5" x 9.25")**  
Standard Lengths: 12', 16', 20'  
Woodgrain: Both Sides

**2" x 12" (1.5" x 11.25")**  
Standard Lengths: 12', 16', 20'  
Woodgrain: Both Sides

## AVAILABLE IN A VARIETY OF COLORS

Black



Driftwood



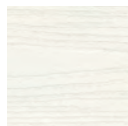
Saddle



Weatherwood



White



Gray



Sand



All 5 standard profiles have a square-edged design. Check custom lengths and special colors availability with your Owens Corning representative. Minimum order quantity may apply. Product samples available upon request. Actual product colors may vary due to photographic lighting sources or screen settings.

## STANDARD PROFILES & PACKAGING

PROFILE (IN)	ACTUAL DIMENSION (IN)	LENGTH			WEIGHT	NO. OF BOARDS PER BUNDLE
		12'	16'	20'		
		WEIGHT (PER BUNDLE)				
2" x 4"	1.5" x 3.5"	1,764 lbs	2,352 lbs	2,940 lbs	1.75 lbs/ft	84
2" x 6"	1.5" x 5.5"	2,227 lbs	2,970 lbs	3,712 lbs	2.90 lbs/ft	64
2" x 8"	1.5" x 7.5"	2,016 lbs	2,688 lbs	3,360 lbs	4.00 lbs/ft	42
2" x 10"	1.5" x 9.25"	2,037 lbs	2,716lbs	3,395 lbs	4.85 lbs/ft	35
2" x 12"	1.5" x 11.25"	1,123 lbs	1,498 lbs	1,872 lbs	5.85 lbs/ft	16
	PALLET WEIGHT	80 lbs	120 lbs	120 lbs		

PROPERTIES	COMPRESSION PARALLEL	COMPRESSION PERPENDICULAR	BENDING STRENGTH	MODULUS OF ELASTICITY	MODULUS OF RUPTURE	FLAME SPREAD INDEX
<b>METHOD</b>	ASTM D198	ASTM D143	ASTM D198	ASTM D4761	ASTM D4761	ASTM E84
<b>DESIGN VALUES</b>	700 psi	600 psi	1,400 psi	350,000 psi	1,400 psi	65–70

Design values appropriate up to 125°F.

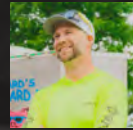


## CONTRACTOR TESTIMONIALS

Owens Corning Lumber Structural Framing delivers strength, durability, and an easy installation. Don't just hear it from us. Hear it from the pros who use it everyday

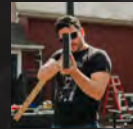
"FOR OUR CLIENTS, OWENS CORNING LUMBER STRUCTURAL FRAMING INJECTS LONG TERM VALUE INTO OUR PROJECTS BY SIGNIFICANTLY INCREASING THE EFFECTIVE LIFE OF OUR EXTERIOR STRUCTURES."

- JEREMY WILKINS, DECKVANGOGH - @DECKMASTERJ



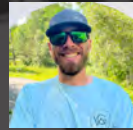
"STRUCTURAL FRAMING THAT'S TRUSTED TO LIE IN THE MUD LIKE A FILTHY PIG."

- GORDON SOUTH, WOOD BULLY DESIGN AND BUILD - @WOODBULLY



"THINK OF OC LUMBER LIKE IF PVC AND PRESSURE TREATED WOOD HAD A BABY SPRINKLED WITH FIBERGLASS, IT WOULD BE THIS BEAUTY. IT CUTS LIKE WOOD BUT THE LONGEVITY YOU GET DOESN'T COMPARE. THERE'S A REASON THIS STUFF IS CALLED FOREVER FRAMING."

- GARRETT DAVIS, G.W. DAVIS CUSTOM DECKS - @THELIFE0FBUB



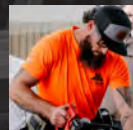
"I WOULD NEVER SET MY BRACKETS AHEAD OF TIME WITH TRADITIONAL PTL BECAUSE OF THE DISCREPENCIES. BUT WITH OC, WHEN YOU ELIMINATE THE DISCREPENCIES IN THE BOARD, YOU ELIMINATE THE DISCREPENCIES IN YOUR BRACKETS AND CREATE A FASTER INSTALL EXPERIENCE."

- JON DAWSON, DAWSON CO. - @JON\_DAWSON



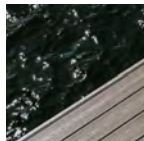
IT ALL CHANGED WHEN WE STARTED THINKING DIFFERENTLY ABOUT THE COST OF ALTERNATIVE FRAMING BECAUSE IF WE ARE BUYING A \$130 DOLLAR DECK BOARD, OUR RAILING IS \$90 PER LINEAR FOOT, AND OUR FASTENERS ARE A DOLLAR A PIECE THEN IT DOESN'T MAKE SENSE TO PUT ALL THIS DOWN ON A JOIST THAT WILL ROT IN 10 YEARS"

- KEVIN CHOQUETTE, RAVIN BUILDERS - @RAVINBUILDERS



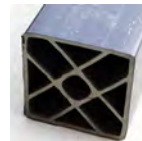
Local standards and codes may vary.

### Other Applications & Products



#### MARINE GRADE DECKING

A wood-free composite alternative that combines outstanding strength and durability to build decks and docks that last.



#### STRUCTURAL POSTS

A high-performance composite alternative designed to enable resilient and durable structures.

LEARN MORE AT [OWENSCORNING.COM/LUMBER](https://www.owenscorning.com/lumber)



OwensCorningLumber

[oc.lumber](https://www.owenscorning.com/lumber)



[oc.lumber](https://www.owenscorning.com/lumber)



#### Owens Corning Lumber

5111 S. Pine Ave. #G  
Ocala, FL 34480 USA  
1-800-GET-PINK®

<https://www.owenscorning.com/framing>

This information and data contained herein is offered solely as a guide in the selection of product. We believe this information to be reliable but do not guarantee its applicability to the user's process or assume any responsibility or liability arising out of its use or performance. The user agrees to be responsible for thoroughly testing any application of the product to determine its suitability. Statements in this publication shall not be construed as representations or warranties or as inducements to infringe on any patent or violate any law, safety code, or insurance regulation. We reserve the right to modify this document without prior notice.

Pub. No. 10026543 C. April 2025. THE PINK PANTHER™ & © 1964-2025 Metro-Goldwyn-Mayer Studios Inc. All Rights Reserved. © 2025 Owens Corning. All Rights Reserved.